

Surface Preparation

All surfaces must be considered dirty and must be cleaned prior to application. Recommended procedures below.

- **Plastic & Glass**

Clean with water and isopropyl alcohol. Wipe dry with a lint-free cloth.

- **Painted Metals & Base Metals**

If freshly painted, make sure surface has dried at least one week. The surface must be cleaned with a solvent such as lacquer thinner or xylol. Wipe dry with a lint-free cloth.

- **Painted Surfaces**

If freshly painted, make sure the surface has dried at least one week. Clean the area with a household cleaner. Rinse thoroughly and dry. Wipe with a lint-free cloth.

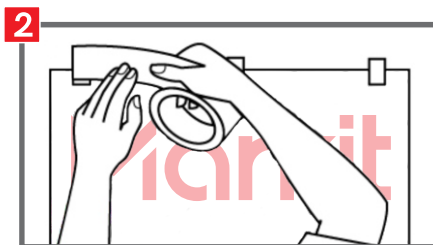
Temperature Requirements

Air and surface temperature must be above 5 degrees Celcius. The warmer the better!

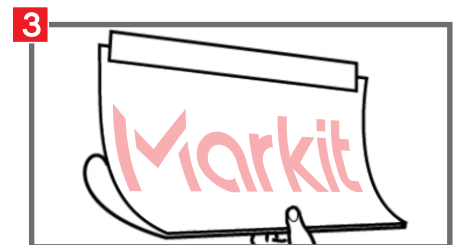
Install Method - Top Hinge



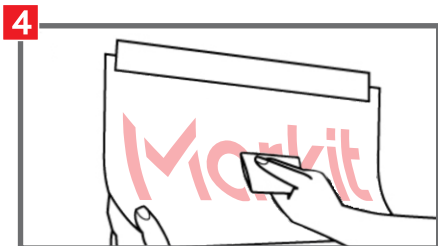
Use 1" - 2" pieces of masking tape to position the pre-masked vinyl in its place (straight, centred, etc.).



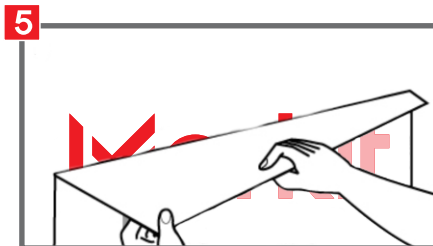
Apply a horizontal tape hinge along the top of your pre-masked vinyl.



Peel the liner half-way and bend it back to meet the edge of the pre-mask. Keep exposed adhesive off surface.



Allow vinyl decal to drape. Using firm initial squeegee pressure, continue at top center and work down and outward to each edge of mask.



Slowly remove the top layer (pre-mask) by pulling back on itself. Then re-squeegee the vinyl decal.